


Anti-Notch2 antibody ab8926

★★★★★ [2 Abreviews](#) [63 References](#) [画像数 3](#)

製品の概要

製品名	Anti-Notch2 antibody
製品の詳細	Rabbit polyclonal to Notch2
由来種	Rabbit
特異性	The Notch2 protein has many isoforms. The immunogenic sequence for the anti-Notch2 antibody is identical to the same region in full length (260+ kDa) as well as the cleaved forms ~82 kDa each (Notch 2 extracellular truncation & Notch 2 intracellular domain) and the post translationally modified forms thereof.
アプリケーション	適用あり: IHC-P
種交差性	交差種: Human 交差が予測される動物種: Mouse, Rat 
免疫原	Synthetic peptide corresponding to Human Notch2 aa 1700-1800 (N terminal) (Cysteine residue). The epitope is only exposed after gamma secretase cleavage and is not accessible in the uncleaved form. Database link: Q04721

 [Run BLAST with](#)

 [Run BLAST with](#)

特記事項

The Life Science industry has been in the grips of a reproducibility crisis for a number of years. Abcam is leading the way in addressing this with our range of recombinant monoclonal antibodies and knockout edited cell lines for gold-standard validation. Please check that this product meets your needs before purchasing.

If you have any questions, special requirements or concerns, please send us an inquiry and/or contact our Support team ahead of purchase. Recommended alternatives for this product can be found below, along with publications, customer reviews and Q&As

製品の特性

製品の状態	Liquid
保存方法	Shipped at 4°C. Store at +4°C short term (1-2 weeks). Upon delivery aliquot. Store at -20°C or -80°C. Avoid freeze / thaw cycle.
バッファー	Preservative: 0.02% Sodium azide Constituents: 0.42% Potassium phosphate, 0.88% Sodium chloride
精製度	Whole antiserum

ポリ/モノ	ポリクローナル
アイソタイプ	IgG

アプリケーション

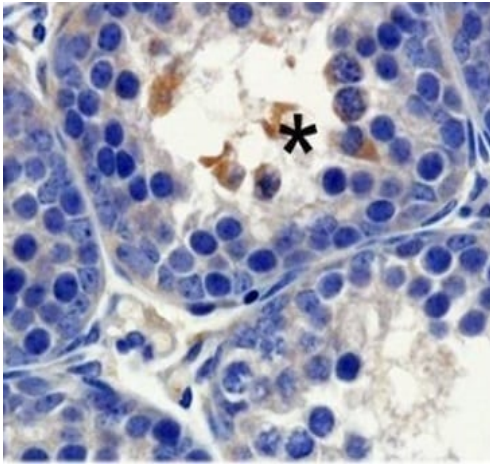
The Abpromise guarantee **Abpromise保証は、** 次のテスト済みアプリケーションにおけるab8926の使用に適用されます
 アプリケーションノートには、推奨の開始希釈率がありますが、適切な希釈率につきましてはご検討ください。

アプリケーション	Abreviews	特記事項
IHC-P		1/500.

ターゲット情報

機能	Functions as a receptor for membrane-bound ligands Jagged1, Jagged2 and Delta1 to regulate cell-fate determination. Upon ligand activation through the released notch intracellular domain (NICD) it forms a transcriptional activator complex with RBPJ/RBPSUH and activates genes of the enhancer of split locus. Affects the implementation of differentiation, proliferation and apoptotic programs (By similarity). Involved in bone remodeling and homeostasis. In collaboration with RELA/p65 enhances NFATc1 promoter activity and positively regulates RANKL-induced osteoclast differentiation. Positively regulates self-renewal of liver cancer cells (PubMed:25985737).
組織特異性	Expressed in the brain, heart, kidney, lung, skeletal muscle and liver. Ubiquitously expressed in the embryo.
関連疾患	Alagille syndrome 2 Hajdu-Cheney syndrome
配列類似性	Belongs to the NOTCH family. Contains 6 ANK repeats. Contains 35 EGF-like domains. Contains 3 LNR (Lin/Notch) repeats.
翻訳後修飾	Synthesized in the endoplasmic reticulum as an inactive form which is proteolytically cleaved by a furin-like convertase in the trans-Golgi network before it reaches the plasma membrane to yield an active, ligand-accessible form. Cleavage results in a C-terminal fragment N(TM) and a N-terminal fragment N(EC). Following ligand binding, it is cleaved by TNF-alpha converting enzyme (TACE) to yield a membrane-associated intermediate fragment called notch extracellular truncation (NEXT). This fragment is then cleaved by presenilin dependent gamma-secretase to release a notch-derived peptide containing the intracellular domain (NICD) from the membrane. Hydroxylated by HIF1AN. Can be either O-glucosylated or O-xylosylated at Ser-613 by POGLUT1.
細胞内局在	Cell membrane and Nucleus. Cytoplasm. Following proteolytical processing NICD is translocated to the nucleus. Retained at the cytoplasm by C8orf4 (PubMed:25985737).

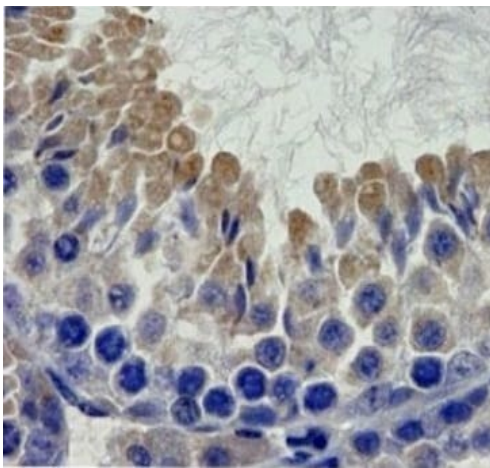
画像



Immunohistochemistry (Formalin/PFA-fixed paraffin-embedded sections) - Anti-Notch2 antibody (ab8926)

Image from Murta, Daniel et al., PLoS ONE 8.8 (2013): e72767. Fig 2J. doi: 10.1371/journal.pone.0072767 P. Reproduced under the Creative Commons license <http://creativecommons.org/licenses/by/4.0/>

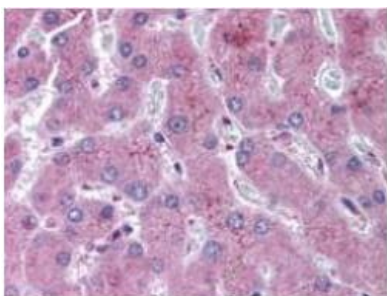
Immunohistochemistry (Formalin/PFA-fixed paraffin-embedded sections) analysis of CD-1 mice testes tissue sections labeling Notch2 with ab8926 at 1/100 dilution. CD-1 mice testes were fixed in 4% neutral phosphate buffered formalin at room temperature for 24 h and, after subsequent dehydration in ethanol, were embedded in paraffin. Tissue sections were stained by haematoxylin and identification of cell types was done through histology; The antigen retrieval step was performed in citrate buffer (10 mM, pH 6.0), Blocking was performed in PBS with 2% w/v bovine serum albumin for one hour at room temperature. Tissue sections were incubated overnight at 4°C with anti-Notch2 (ab8926). Positive immunostaining in brown color. Notch2 is expressed in germ cells entering meiosis.



Immunohistochemistry (Formalin/PFA-fixed paraffin-embedded sections) - Anti-Notch2 antibody (ab8926)

Image from Murta, Daniel et al., PLoS ONE 8.8 (2013): e72767. Fig 2J. doi: 10.1371/journal.pone.0072767 P.

Immunohistochemistry (Formalin/PFA-fixed paraffin-embedded sections) analysis of CD-1 mice testes tissue sections labeling Notch2 with ab8926 at 1/100 dilution. CD-1 mice testes were fixed in 4% neutral phosphate buffered formalin at room temperature for 24 h and, after subsequent dehydration in ethanol, were embedded in paraffin. Tissue sections were stained by haematoxylin and identification of cell types was done through histology; The antigen retrieval step was performed in citrate buffer (10 mM, pH 6.0), Blocking was performed in PBS with 2% w/v bovine serum albumin for one hour at room temperature. Tissue sections were incubated overnight at 4°C with anti-Notch2 (ab8926). Positive immunostaining in brown color. Notch2 is ubiquitously expressed in germ cells.



Immunohistochemistry (Formalin/PFA-fixed paraffin-embedded sections) - Anti-Notch2 antibody (ab8926)

Immunohistochemistry (Formalin/PFA-fixed paraffin-embedded sections) analysis of human liver tissue sections labeling Notch2 with ab8926 at 1/500 dilution. No pre-treatment of sample was required. The image shows the localization of antibody as the precipitated red signal, with a haematoxylin purple nuclear counter stain.

Please note: All products are "FOR RESEARCH USE ONLY. NOT FOR USE IN DIAGNOSTIC PROCEDURES"

Our Abpromise to you: Quality guaranteed and expert technical support

- Replacement or refund for products not performing as stated on the datasheet
- Valid for 12 months from date of delivery
- Response to your inquiry within 24 hours
- We provide support in Chinese, English, French, German, Japanese and Spanish
- Extensive multi-media technical resources to help you
- We investigate all quality concerns to ensure our products perform to the highest standards

If the product does not perform as described on this datasheet, we will offer a refund or replacement. For full details of the Abpromise, please visit <https://www.abcam.co.jp/abpromise> or contact our technical team.

Terms and conditions

- Guarantee only valid for products bought direct from Abcam or one of our authorized distributors